

# **IP PBX kit**

**Model : PBX-1U**

## 1.1 Overview

PBX-1U kit works with IMI45 embedded Mini-itx ATOM motherboard and designed for Small & Medium Businesses. System developers can run most of the production version PBX software including asterisk in this kit. It can also simplify the installation procedure and thus, no more complicated migration work needed.

The PBX-1U kit comes with Intel Atom N270 processors up to 1.6 GHz. The system memory can be equipped with 240-pin DDR2 533/667/800 SDRAM socket (up to 2 GB). There are flexible combinations of data storage such as 44 pin IDE header and SATA connector that can meet the demands of any operating systems and applications. In addition, it consists of 1 PCI Slot that allow users to combine analogs cards such as TDM410P,TDM800P,TE110P

## 1.2 Key Features

- 80 Concurrent calls
- Up to 1000 registers
- Full Feature IP PBX
- Video Calls
- Recording
- DID(Direct Inward Dialing Number)
- Support SKYPE for SIP
- Call Monitoring

## 1.3 Basic Features

- Codec: G.711-Ulaw,G.711-Alaw,G.726,G.729,GSM,SPEEX,H.261,H.263,H.263+,H.264
- Call Hold/Forward/Transfer/Waiting/Parking
- Call Paging and Intercom
- Caller ID
- Music On Hold
- DISA(Direct Inward System Access)
- Flexible Dial Plan
- Ring Group
- Conference Room
- Call Logs
- BLF(Busy Lamp Field)
- Configuration By web
- Built-in SIP/IAX2 server
- Build-in voice mail server
- System Backup and Restore
- Echo Cancelation/VAD

Support Static/DHCP/PPPOE  
DDNS Client(Support Dyndns.org)  
Support NTP(Network Time Protocol)

#### **1.4 Technical Specifications:**

CPU: Intel Atom N270 1.6GHz

DRAM: 2GB DDR2 SDRAM

HDD : 160G

Storage:

44pin PATA connector for 2.5" Notebook Hard Drive

1 SATA slot for 2.5" Notebook SATA Hard Drive (with DC12V Power in)

Power: 20PIN ATX power supply

Three front panel LEDs, for 3 programmable GPO status indicator

Push button: For mode setting switch, Accessing a programmable GPI, Active low means switch is pressed

Expansion: 1 PCI slot, fixed and individual interrupt

Connectivity:

1 PCI-E 10/100/1000Mbps Ethernet controller ( rlt8111c)

1 PCI-E 10/100Mbs Ethernet controllers(rtl8103e)

IMI45 is configured with the above 2 Ethernet Channels.

I/O: 1\*DB9 serial port, for debug console usage, RS232

#### **1.5 Rack Mountable**

Size: 4.5x45x28.2 cm

G.W.:5kg

N.W.:3.5kg

#### **1.6 Asterisk Telephony Card Options:**

TDM410P PCI FXO/FXS card with 4 ports

TDM800P PCI FXO/FXS card with 8 ports

TE110P PCI PRI card with single port

#### **1.7 Default Software : Elastix2.0**

Software options:

Asterisk, Elastix, trixbox, PBX in a flash, mISDN, ISDN4BSD, m0n0wall, pfSense, FreeBSD, Askozia, Voyage-linux, AstBoxLinux

## 2.Configure the device via GUI

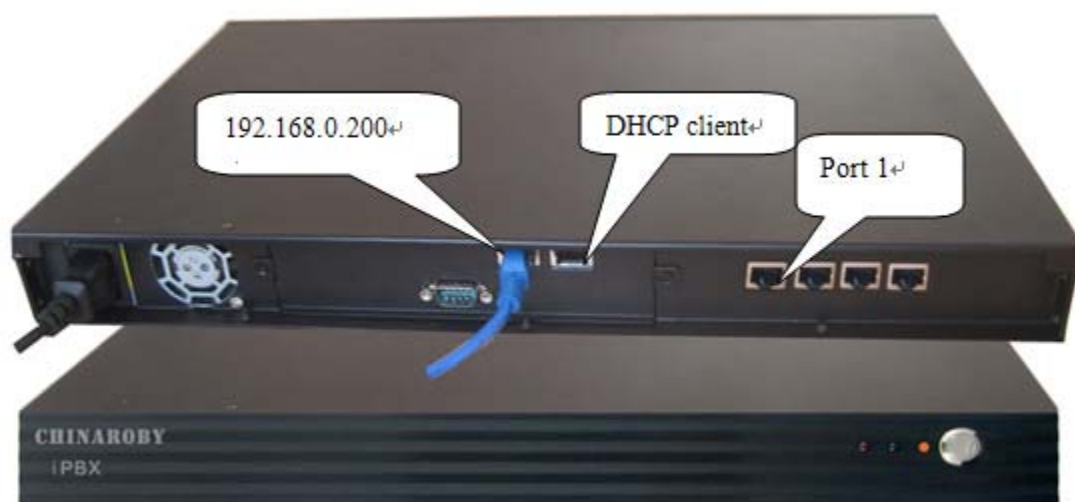
### 2.1 Access the GUI

You may setup the ip pbx by IE , the default IP address is [192.168.0.200](http://192.168.0.200)

Put the default ip in your web browser and it will redirect to the setting page of the ip pbx, the default password for the web access is:

**Username: admin**

**Password: 123456**



» Welcome to Elastix

Please enter your username and password

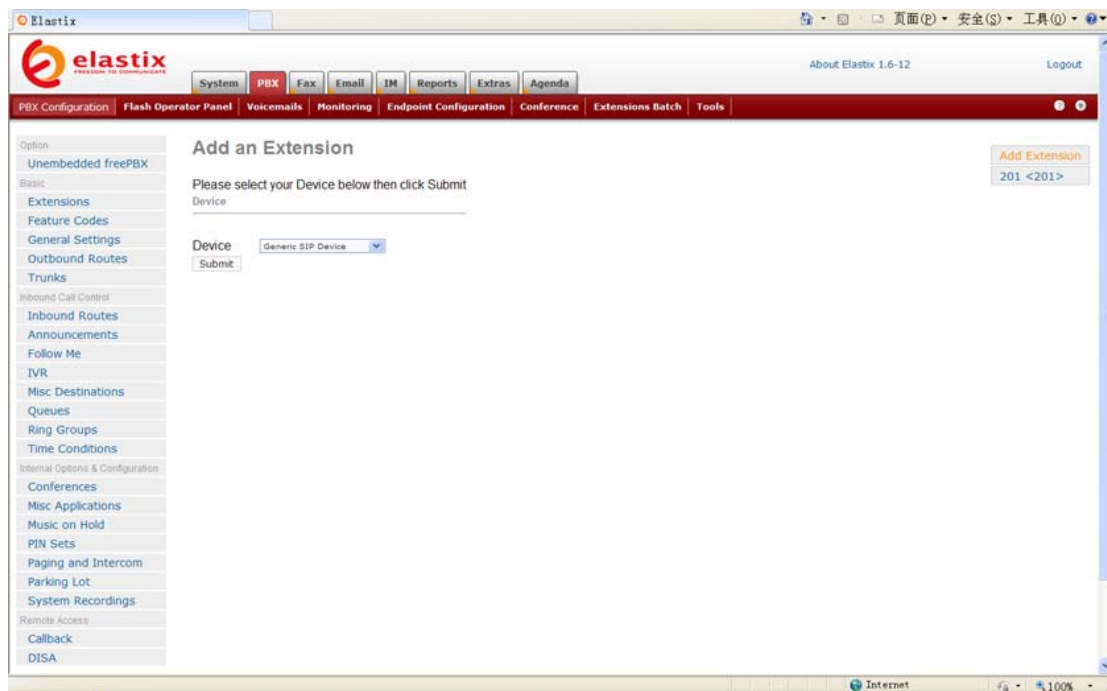
Username:

Password:

Copyright © 2006 by [PaloSanto Solutions](http://www.palosanto.com)

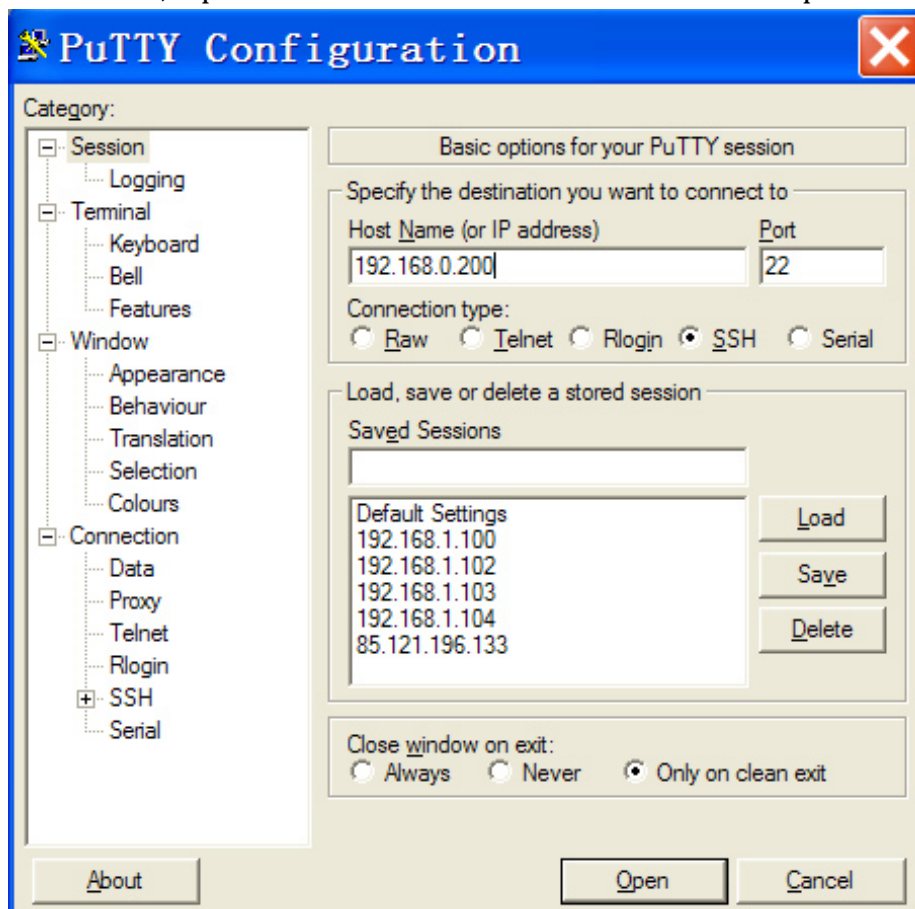
2.2 If you can't access the PBX , please check if you have connect the RJ45 cable to the WAN port and your computer is in the same network 192.168.0.xxx as the PBX.

You will see the settings of the IP PBX as below

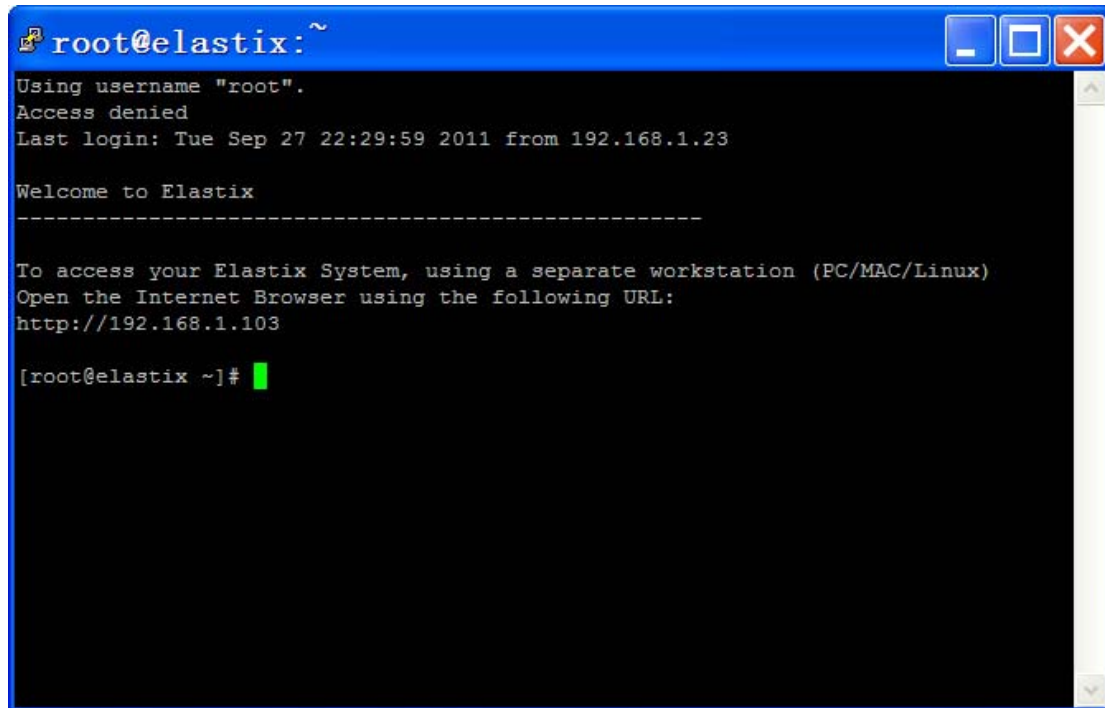


### 3. Configure the device via SSH

Run PuTTY, input the IP address 192.168.0.200 and click Open.



**User name : root**  
**Password : 123456**



```
root@elastix:~  
Using username "root".  
Access denied  
Last login: Tue Sep 27 22:29:59 2011 from 192.168.1.23  
  
Welcome to Elastix  
-----  
To access your Elastix System, using a separate workstation (PC/MAC/Linux)  
Open the Internet Browser using the following URL:  
http://192.168.1.103  
  
[root@elastix ~]#
```